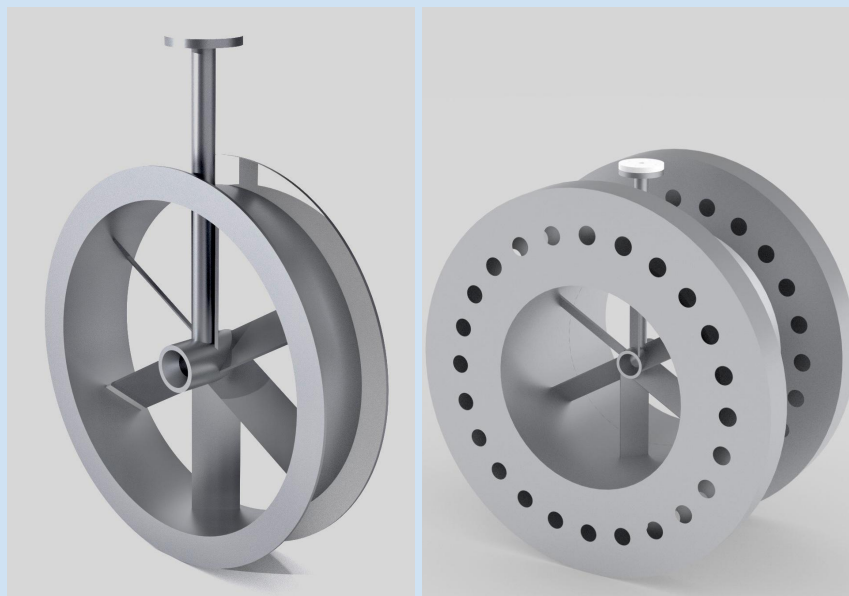




# DR. B. PITTALUGA & C. s.r.l

## STATIC MIXER TWIN - P for mixing in turbulent flow

*Two mixing units in one: the central super venturi pre-dilutes the additives, the main turbine mixes thoroughly on the whole pipe section.  
It maintains the efficiency downstream along the piping.*



### Features:

- Maintenance of efficiency downstream along the piping
- No moving parts
- Minimum space required
- Little pressure drop
- Excellent mixing power

### Typical applications:

- Liquid - liquid exchange
- Addition of flocculants
- Polyelectrolyte dilution (Polypreparators Systems)
- Mixing of miscible liquids

### Materials and executions:

- Shell and interiors in AISI 316 L or others metal alloys
- Executed with fixed or removable components
- Flanged connections as per DIN, ANSI, Tri-Clamp, SMS
- Complies with ATEX and PED directive

Dr. B. PITTALUGA & C srl  
Via Muratori, 18 24030 MOZZO – ITALY  
Tel. +39 035 466246  
Fax. +39 035 618710  
E-mail. [info@pittamix.it](mailto:info@pittamix.it)

